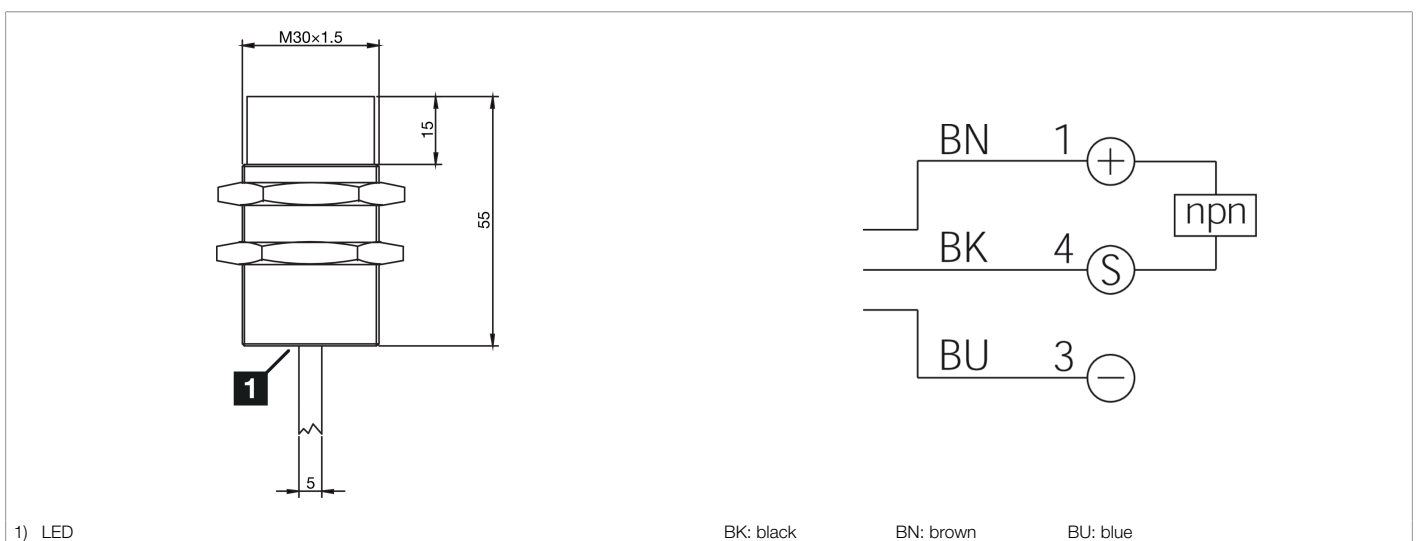
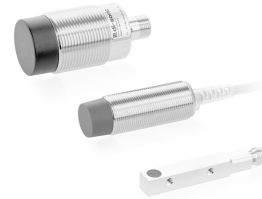






**213176**  
**INS-M30-N25NS-2C**  
**Inductive proximity sensor**

- Double switching distance
- Highly flexible cable
- Short-circuit protection
- LED switching status display
- High protection type



| Function |  |  |  |  |  |  |  |  |  |  |  |  |                                                                                                                                                                             |
|----------|--|--|--|--|--|--|--|--|--|--|--|--|-----------------------------------------------------------------------------------------------------------------------------------------------------------------------------|
|          |  |  |  |  |  |  |  |  |  |  |  |  |   |

| Technical data (typ.)        | +20°C, 24 V DC                           |
|------------------------------|------------------------------------------|
| Service voltage              | 10 ... 30 V DC                           |
| Internal power consumption   | 10 mA                                    |
| Insulation voltage endurance | < 500 V DC                               |
| Installation type            | non-flush                                |
| Thread                       | M30 x 1,5                                |
| Housing length               | 55 mm                                    |
| Housing material             | Brass (nickel-plated)                    |
| Material of cable            | PVC                                      |
| Protection class             | III, operation on protective low voltage |
| Operating principle          | inductive                                |
| Evaluation                   | digital                                  |
| Design                       | Thread                                   |
| Characteristics              | Double switching distance                |
| Product series               | INS-200 Standard 2-SN                    |
| Switching output             | npn, 200 mA, NO                          |
| Voltage drop (max.)          | 1,5 V DC                                 |
| Switching distance (SN)      | 25 mm                                    |
| Standardized measuring plate | 75 x 75 x 1 mm                           |
| Switching hysteresis (max.)  | < 10 %                                   |
| LED Anzeige                  | Yes                                      |

**213176****INS-M30-N25NS-2C****Inductive proximity sensor****Technical data (typ.)****+20°C, 24 V DC**

Switching frequency

240 Hz

Ambient temperature during operation

-25 ... +70 °C

Protection type

IP 67

Connection

Cable, 2,0 m

**More information / accessories**<https://www.di-soric.com/213176>