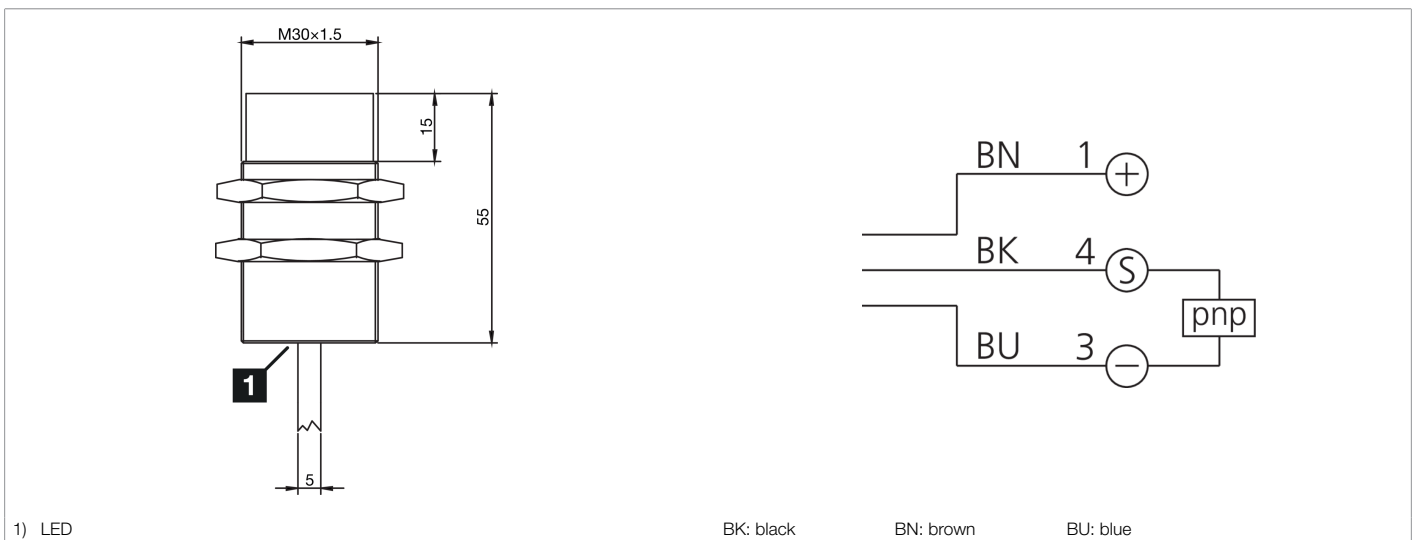
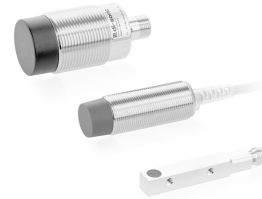




213263
INS-M30-N15PO-2C
Inductive proximity sensor

- Single switching distance
- Highly flexible cable
- Short-circuit protection
- LED switching status display
- High protection type



Function

													CE	
--	--	--	--	--	--	--	--	--	--	--	--	--	----	---

Technical data (typ.)	+20°C, 24 V DC
Service voltage	10 ... 30 V DC
Internal power consumption	10 mA
Insulation voltage endurance	< 500 V DC
Installation type	non-flush
Thread	M30 x 1,5
Housing length	55 mm
Housing material	Brass (nickel-plated)
Material of cable	PVC
Protection class	III, operation on protective low voltage
Operating principle	inductive
Evaluation	digital
Design	Thread
Characteristics	Single switching distance
Product series	INS-100 Standard
Switching output	pnp, 200 mA, NC
Voltage drop (max.)	1,5 V DC
Switching distance (SN)	15 mm
Standardized measuring plate	45 x 45 x 1 mm
Switching hysteresis (max.)	< 10 %
LED Anzeige	Yes



213263

INS-M30-N15PO-2C

Inductive proximity sensor

Technical data (typ.)

+20°C, 24 V DC

Switching frequency

240 Hz

Ambient temperature during operation

-25 ... +70 °C

Protection type

IP 67

Connection

Cable, 2,0 m

More information / accessories

<https://www.di-soric.com/213263>